

# Unit 12/13 | Lloyds Court | Milton Keynes | MK9 3EH



## CITY CENTRE PRIME RETAIL UNIT

Ground floor 1,440 sq ft First floor 2,190 sq.ft



All enquiries to Punch Retail | 01908 311517 | [www.punch.org.uk](http://www.punch.org.uk) | [info@punch.org.uk](mailto:info@punch.org.uk)

# Unit 12/13 | Lloyds Court | Milton Keynes | MK9 3EH

Unit 12/13 is available to let on a new lease.

The unit benefits from being fitted out and has a ground floor of 1,440 sq.ft and a first floor of 2,190 sq.ft.

Situated on Silbury Boulevard directly opposite the Centre:MK

Ample parking available which is free after 6pm.



All enquiries to Punch Retail | 01908 311517 | [www.punch.org.uk](http://www.punch.org.uk) | [info@punch.org.uk](mailto:info@punch.org.uk)



# Unit 12/13 | Lloyds Court | Milton Keynes | MK9 3EH

## Description & Location

- **Location:** Prime Central Milton Keynes. Directly opposite Centre:MK.
- **Retail Opportunities:** Until recently this unit traded as Schmidt Kitchens and is now available for general retail or restaurant use.
- **Accommodation:** The unit is 1,440 sq.ft ground and 2,190 sq.ft on first. A fully compliant lift is installed.
- **Usage:** Currently class E
- **Rent:** Quoting rent on application.
- **Terms:** Unit is available to let immediately on a new lease for a term of 10 years. Detailed terms on application to the letting agents.
- **Legal Costs:** Each party to bear their own legal and professional costs

# Unit 12/13 | Lloyds Court | Milton Keynes | MK9 3EH

## Viewings:

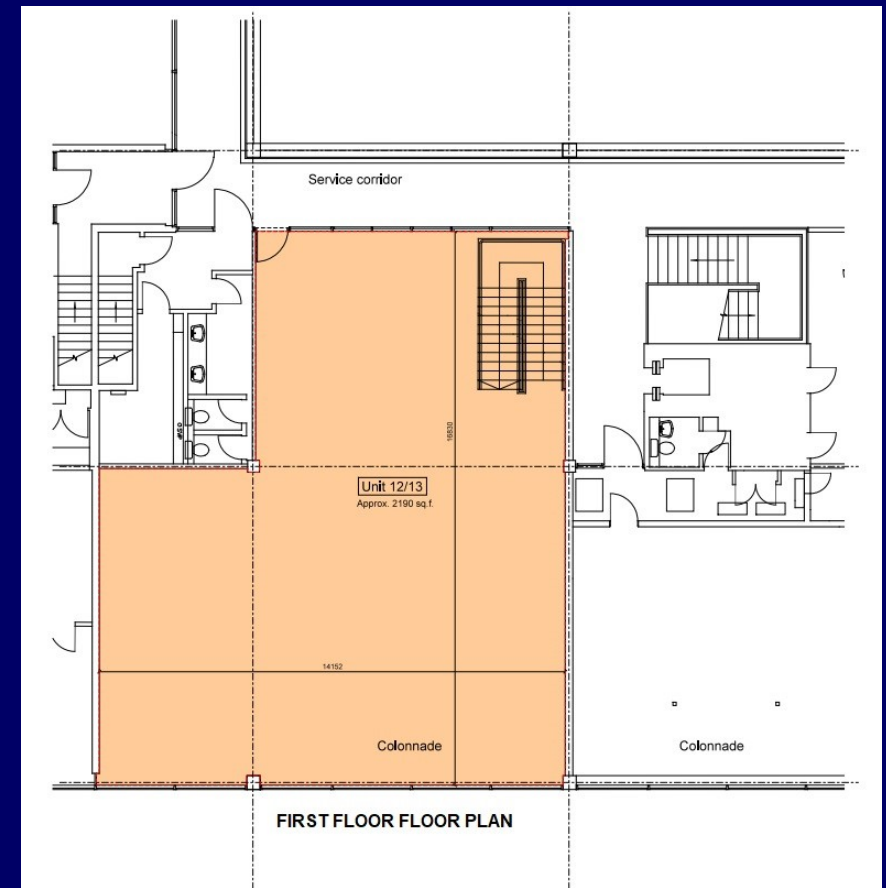
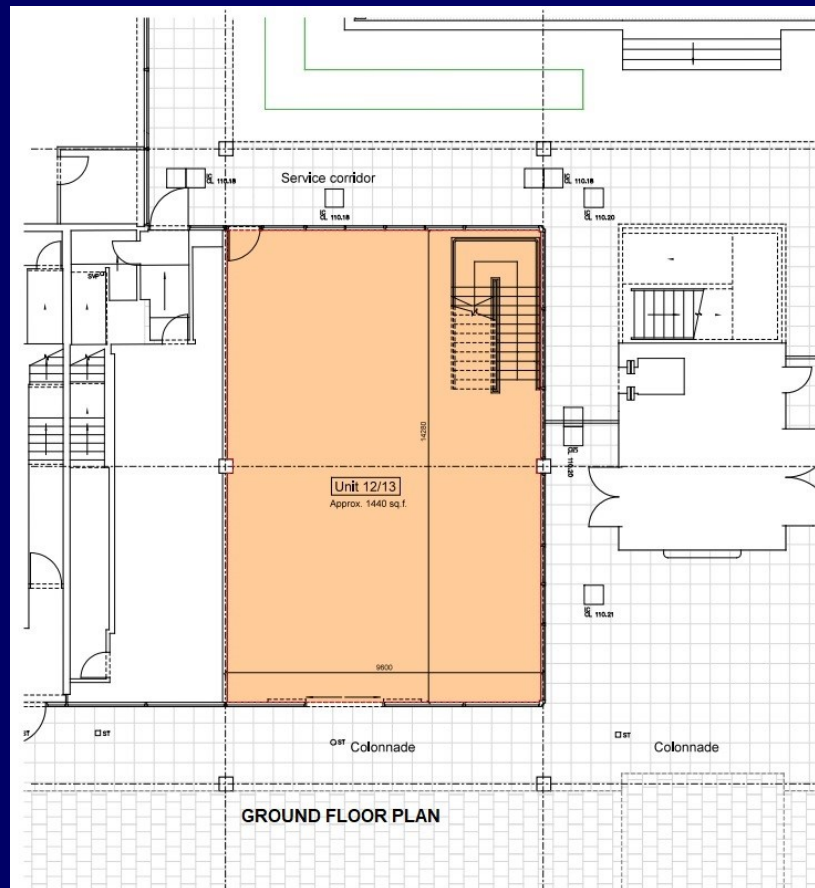
Further information  
and viewings strictly  
by appointment only  
via

**Punch Retail & Leisure**

**01908 311517**

[rachel@punch.org.uk](mailto:rachel@punch.org.uk)

[emma@punch.org.uk](mailto:emma@punch.org.uk)



### MISREPRESENTATION ACT

PATRICK PUNCH & CO. FOR THEMSELVES AND FOR THE VENDORS OF THIS PROPERTY WHOSE AGENTS THEY ARE GIVEN NOTICE THAT; (I) THE PARTICULARS ARE PRODUCED IN GOOD FAITH, ARE SET OUT AS A GENERAL GUIDE ONLY AND DO NOT CONSTITUTE ANY PART OF A CONTRACT; (II) NO PERSON IN THE EMPLOYMENT OF PATRICK PUNCH HAS ANY AUTHORITY TO MAKE OR GIVE ANY REPRESENTATION OR WARRANTY WHATEVER IN RELATION TO THIS PROPERTY.

**PUNCH**

[www.punch.org.uk](http://www.punch.org.uk)

All enquiries to Punch Retail | 01908 311517 | [www.punch.org.uk](http://www.punch.org.uk) | [info@punch.org.uk](mailto:info@punch.org.uk)

**01908 311517**