

STONY STRATFORD HIGH STREET, MILTON KEYNES

67 HIGH STREET | MK11 1AY

GRADE II LISTED AT 2,540 SQ FT GROUND FLOOR

FORMER LLOYDS BANK

- Grade II listed period property with excellent potential for use as restaurant, café, retail or pub
- Stony Stratford is a very strong trading location with excellent demographic catchment
- Ground Floor area 2,540 SQ FT
- Ample public parking nearby
- New 15 or 20 year effectively FRI lease
- Rent on application
- Rent free incentive subject to terms and financial status
- Planning has been granted to convert the upper floors into 5 flats



Punch Retail | 01908 311517 | www.punch.org.uk info@punch.org.uk



67 High Street | Stony Stratford | MK11 1AY

Description : The property is grade II listed and has historically been occupied by Lloyds Bank as a retail banking hall on the ground floor and office space above.

Location: Situated on traditional High Street in historic town of Stony Stratford situated in the north of Milton Keynes . Other nearby retailers include Dominos, Cycle King, Nationwide Building Society, Budgens and Oxfam. There are also numerous successful independent traders all along the High Street, which is very popular and has plenty of free parking areas both on the street and nearby.

Rateable Value: To be re-assessed. Prospective tenants to make their own enquiries of the VO.

Terms: Property is available to let by means of a new lease for a term of years to be agreed. Full details and terms available from rachel@punch.org.uk or emma@punch.org.uk

Legal Costs: Each party to bear their own legal costs

Accommodation: The property will provide a clear ground floor L shaped area of 2,540 sq ft, with rear access and garden area. Rear loading/servicing yard and parking available.

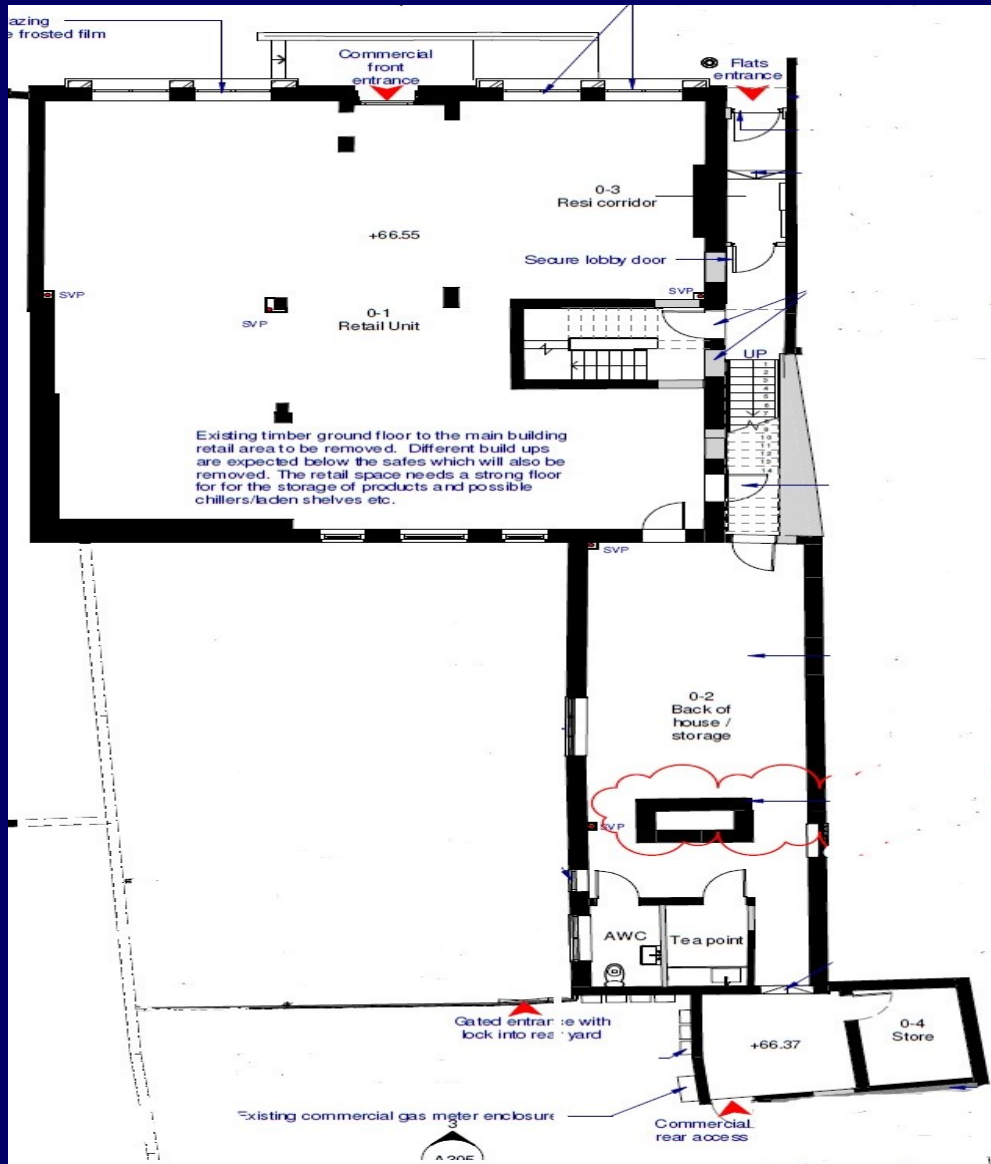
The existing frontage is to be retained

All areas are approximate.

Gross Frontage 13.25 m (43' 6")



67 High Street | Stony Stratford | MK11 1AY



MISREPRESENTATION ACT

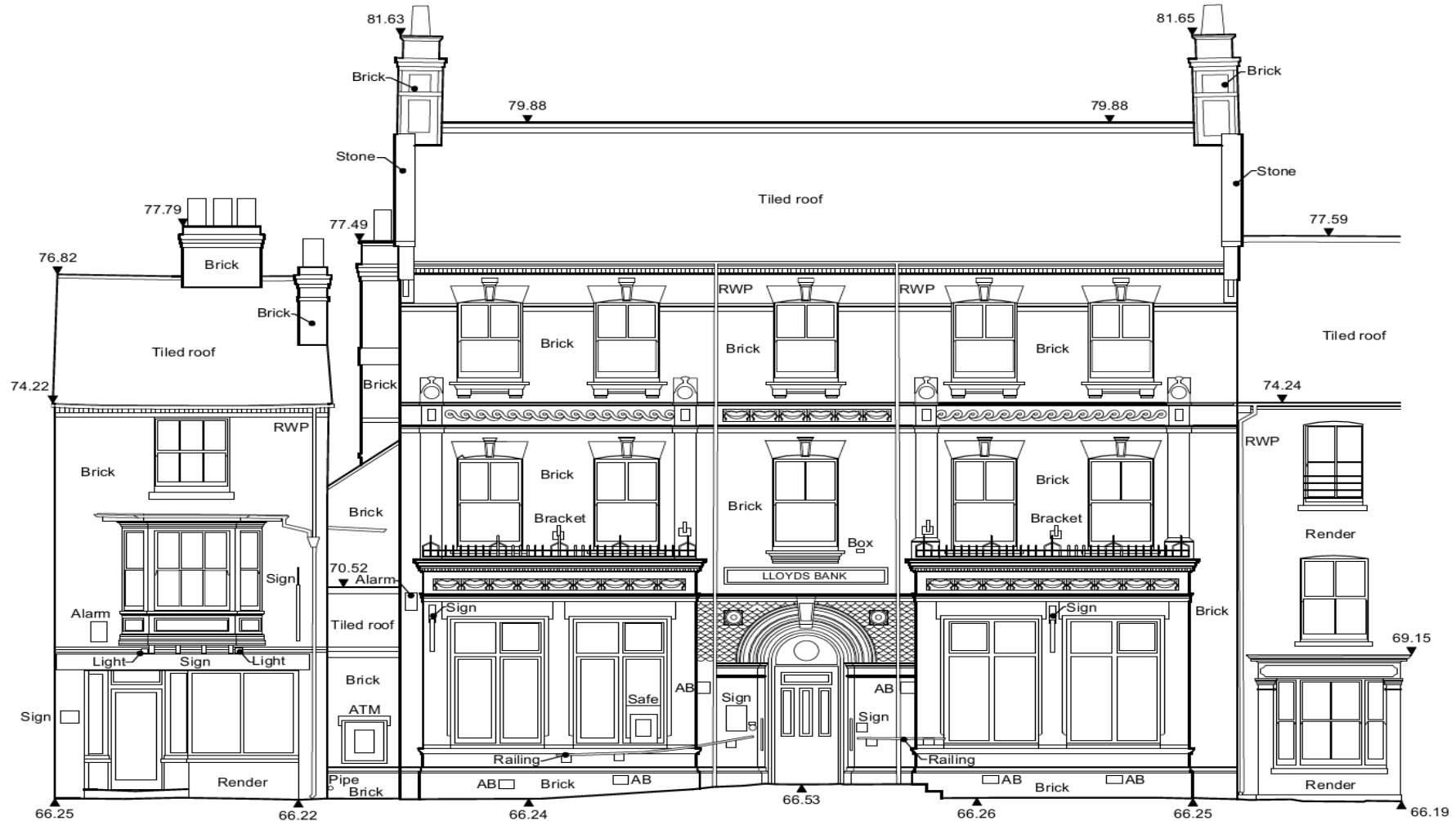
PATRICK PUNCH & CO. FOR THEMSELVES AND FOR THE VENDORS OF THIS PROPERTY WHOSE AGENTS THEY ARE GIVEN NOTICE THAT; (I) THE PARTICULARS ARE PRODUCED IN GOOD FAITH, ARE SET OUT AS A GENERAL GUIDE ONLY AND DO NOT CONSTITUTE ANY PART OF A CONTRACT; (II) NO PERSON IN THE EMPLOYMENT OF PATRICK PUNCH HAS ANY AUTHORITY TO MAKE OR GIVE ANY REPRESENTATION OR WARRANTY WHATEVER IN RELATION TO THIS PROPERTY.

PUNCH

www.punch.org.uk

01908 311517

67 High Street | Stony Stratford | MK11 1AY



Elevation 1