

**27 ATLAS WAY | OAKGROVE VILLAGE, MILTON KEYNES,  
MK10 9SG**



**PUNCH**  
[www.punch.org.uk](http://www.punch.org.uk)  
**01908 311517**

**APPROX 1,252 SQ FT - CLINIC, OFFICE USE OR RETAIL USE**

Punch Retail & Leisure | 01908 311517 | [www.punch.org.uk](http://www.punch.org.uk) | e: [info@punch.org.uk](mailto:info@punch.org.uk)





# 27 ATLAS WAY | OAKGROVE VILLAGE, MILTON KEYNES, MK10 9SG



## Location:

Oakgrove Village is situated to the East of Central Milton Keynes and forms part of a thriving community.

This has created over 1,105 new homes, a nursery, a primary school, a leisure centre, a large car park and a 36,500 sq ft Waitrose store.

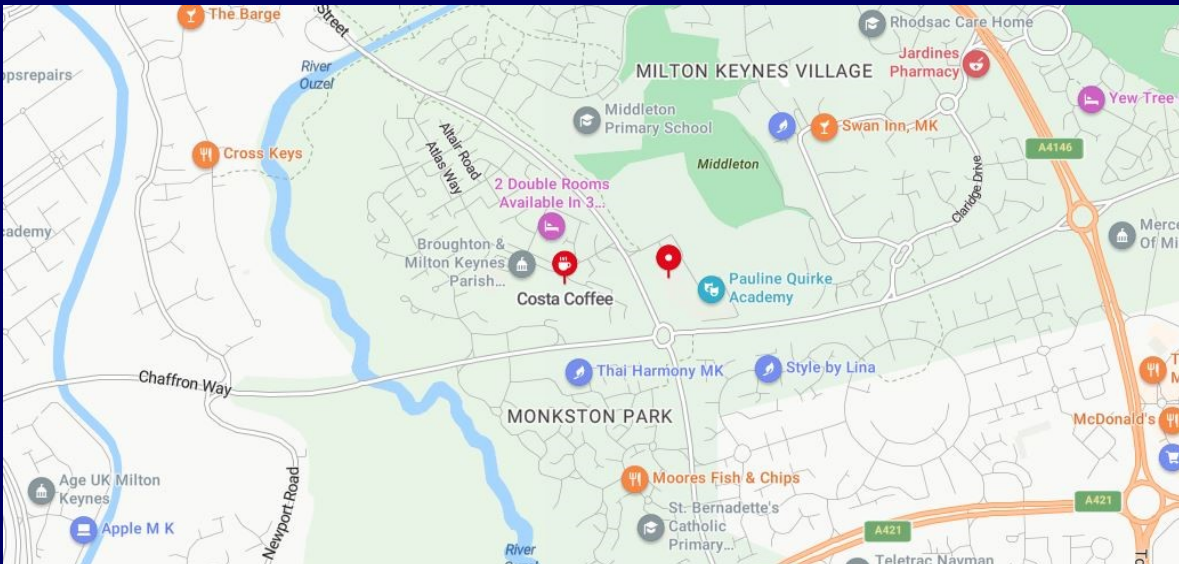
## Description and Accommodation:

27 Atlas Way has ground floor area 1,252 sq ft

The unit comprises benefits from a good level fitout including kitchen and WC together with two allocated car parking spaces to the rear.

The space is well fitted out as an independent unit with its own entrance and is suitable for a range of commercial uses including offices, medical/clinic, childcare, local needs retail etc.

There are over 330 free car parking spaces in the Oakgrove shopping village.



# 27 ATLAS WAY | OAKGROVE VILLAGE, MILTON KEYNES, MK10 9SG

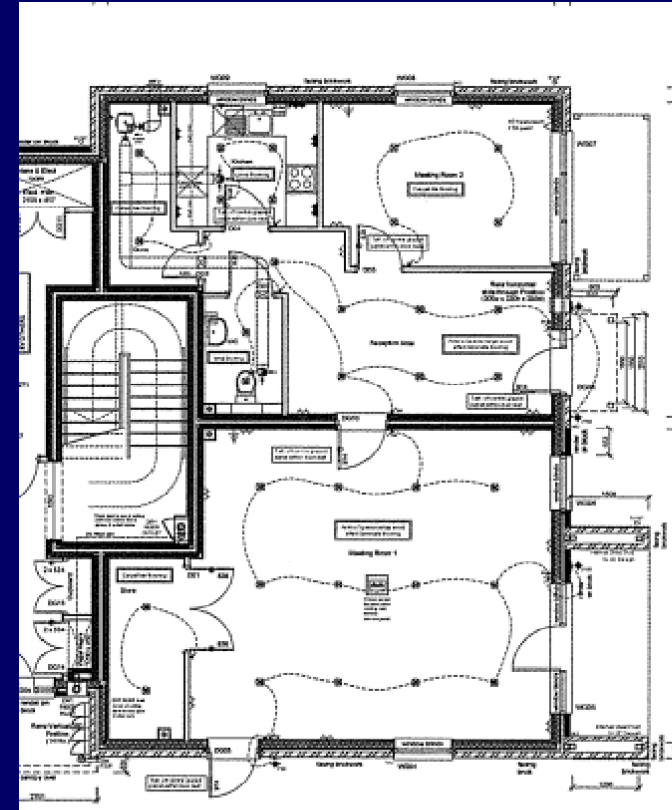
## Terms:

Details regarding rent and other terms are available on application to Patrick Punch & Co.

## Viewings:

Further information and viewings strictly by appointment only via

**Punch Retail & Leisure**



### MISREPRESENTATION ACT

PATRICK PUNCH & CO. FOR THEMSELVES AND FOR THE VENDORS OF THIS PROPERTY WHOSE AGENTS THEY ARE GIVEN NOTICE THAT; (I) THE PARTICULARS ARE PRODUCED IN GOOD FAITH, ARE SET OUT AS A GENERAL GUIDE ONLY AND DO NOT CONSTITUTE ANY PART OF A CONTRACT; (II) NO PERSON IN THE EMPLOYMENT OF PATRICK PUNCH HAS ANY AUTHORITY TO MAKE OR GIVE ANY REPRESENTATION OR WARRANTY WHATEVER IN RELATION TO THIS PROPERTY.

**PUNCH**

[www.punch.org.uk](http://www.punch.org.uk)

**01908 311517**